

## Anbauvarianten E-Parking XS und XL – TrendVario 6000er Serie

### Mounting options for E-Parking XS and XL – TrendVario 6000 series




- Montage der Ladesäule stehend auf Plattform
- Übergabedose an der Rückwand zum weiteren Anschluss an das Hausnetz oder an einem Lastmanagement
- Es sind beide Anbauvarianten, also E-Parking XS bzw. XL auf allen Plattformen möglich, mit Ausnahme auf der EG Plattform des TrendVario 6200+.
- Bauseitige Leistung: Wallbox, Stromzähler (wenn benötigt) / Lastmanagement (wenn benötigt) / Unterverteilung / Auflegen der bauseitigen Stromzuführung

*Upright installation of the charging column on the platform*




*Transfer box on the rear wall for additional connection to the building's mains network or a load management system*

*Both attachment variants, i.e. E-Parking XS and XL, are possible on all platforms, with the exception of the GF platform of the TrendVario 6200+.*







*Services / items to be provided by the customer: wall box, electricity meter (if required) / load management system (if required) / sub-distributor / installation of the on-site power supply*

| TrendVario 6100   TrendVario 6100+ |                 |   |               |   |
|------------------------------------|-----------------|---|---------------|---|
| EG GF                              | 3,7 kW (3.7 kW) |  | 11 kW – 22 kW |  |
| UG LF                              | 3,7 kW (3.7 kW) |  | 11 kW – 22 kW |  |

trendvario 6100  
trendvario 6100+

| TrendVario 6200+ |                 |   |                                   |  |
|------------------|-----------------|---|-----------------------------------|--|
| OG UF            | 3,7 kW (3.7 kW) |   | 11 kW – 22 kW                     |  |
| EG GF            | 3,7 kW (3.7 kW) |  | nicht möglich <i>not possible</i> |  |

trendvario 6200+

| TrendVario 6300   TrendVario 6300+ |                 |   |               |   |
|------------------------------------|-----------------|---|---------------|---|
| OG UF                              | 3,7 kW (3.7 kW) |  | 11 kW – 22 kW |  |
| EG GF                              | 3,7 kW (3.7 kW) |  | 11 kW – 22 kW |  |
| UG LF                              | 3,7 kW (3.7 kW) |  | 11 kW – 22 kW |  |

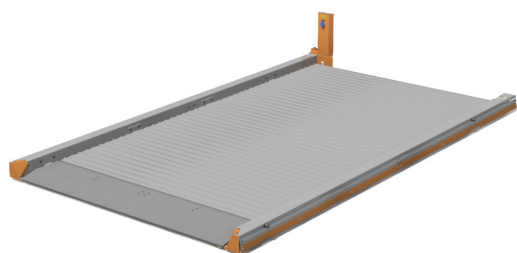
OG = Obergeschoss / EG = Erdgeschoss / UG = Untergeschoss  
UF = Upper Floor / GF = Ground Floor / LF = Lower Floor

trendvario 6300  
trendvario 6300+

#### E-Parking XS – 3,7 kW (3.7 kW)

CEE Steckdose dreipolig  
*Three-pin CEE socket*

- \*Ladedauer bei 3,7 kW = ca. 11 Std.  
*\*Charging time at 3.7 kW approx. 11 h*

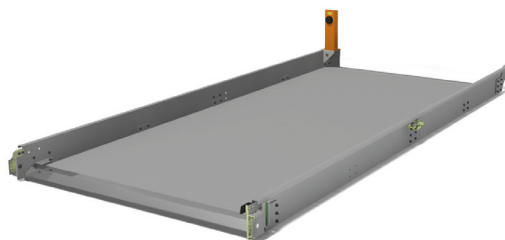


(Beispiel auf EG-Plattform TV 6200+)  
*(Example on GF platform TV 6200+)*

#### E-Parking XL – 11 kW – 22 kW

Ladesteckdose Typ 2 mit Ladesteckerverriegelung  
*Type 2 charging socket with charging-plug lock*

- \*Ladedauer bei 11 kW = ca. 3,5 Std.  
*\*Charging time at 11 kW approx. 3.5 h*
- \*Ladedauer bei 22 kW = ca. 2 Std.  
*\*Charging time at 22 kW approx. 2 h*



(Beispiel auf OG-Plattform TV 6200+)  
*(Example on UF platform TV 6200+)*

\* Ladedauer sind Richtwerte eines leeren 40-kWh-Akkus | *Charging times are guideline values for an empty 40 kWh battery*

Über die Anschlussmöglichkeit unserer Ladesäule an Ihrem Hausnetz informieren Sie sich bitte bei Ihrem Elektrofachbetrieb.  
*Please contact a certified electrician to discuss the options for connecting our charging column to your building's mains network.*